

The Argentina 1935-51 Definitives



Notes

2009

**Postmarks, Covers, Postcards,
Postal Entires and PERFINs**

5

Antonio Rubiera

December 2009

Introduction	5
My reference scheme	6
How this series came about.....	7
Catalogs and other References	9
25c range of use.....	12
Second day of issue 1935 cover	13
Brigada and Ambulante explained.....	15
A few 40c early postmarks.....	17
Buenos Aires non-standard postmarks part 1.....	19
Buenos Aires non-standard postmarks part 2.....	23
An early cover bearing the 10c Rivadavia Brown.....	27
Buenos Aires special use postmarks	30
The 1943 CL1B 1 peso and 2 pesos on cover	34
Late usage of the 2 pesos and 5 pesos	36
A postal entire with Census information.....	38
A small selection of used postcards.....	44
5c Postal Entires Plain Type.....	49
5c Postal Entires Post Horn Type	55
5c Postal Entires Post Horn in Shield Type	60
A 50c1E Perfin	62
Several 2 pesos PERFINs.....	63
Peculiar PERFINs	69
BE PERFIN	72
High value PERFINs	74
Perfins Selection in Alphabetical Order	75

Introduction

These stamps were issued in denominations from ½ centavo to 20 pesos. There is a remarkable factor of 4,000 between the largest and the smallest denomination. This series was in use from October 1, 1935 to as late as 1961, by which time only one value was in postal use. This series was also issued as Departmental Officials and 'Servicio Oficial' officials. This series has an expansive postal history, especially during World War II, when Argentina supplied both sides of the conflict.

Besides the beautiful two-color designs for the high values, this series is attractive to definitive collectors because of the daunting challenge it poses to classify the large number of papers on which it was issued-perhaps as many as 20! In these notes I serialize the work I have done to understand the Argentina 1935-51 definitives. Beginning collectors to this series encounter several stumbling blocks when deciding which stamps to acquire from this series. The first stumbling block, which applies mostly to the Scott catalogue, is that the stamps have been grouped using a scheme that is based on the major watermark types; ignoring the difference for the same watermark of the various papers. The second stumbling block, which applies mostly to the Argentinean specialized catalogues, is that the various issues have been grouped in a loosely chronological scheme that separates Argentinean papers from imported papers. I use my own scheme to describe the papers.

My reference scheme

I use my own reference scheme to describe this series. This reference scheme enables me to have a more complete listing of the issues. I consider it a temporary scheme until I am able to arrive at a fairly complete listing.

The scheme combines:

1. The denomination in a computer-friendly format: For example, instead of 1/2c I use 05c, and instead of 2 1/2 c, I use 2p5c.
2. Mention of the person on the stamp (optional) or name acronym: I need this naming convention for the 3 centavos stamp, which was issued with the San Martin (SM) and Mariano Moreno (M) designs. The 20c Martin Guemes was issued with (JMG) or without (MG) the middle name shown.
3. Reference to the paper if I know of more than one: There are 30c1E1, 30c1E2, etc. If the stamp was only issued on one paper, there is no need for this naming convention, as is the case for the 3cSMGr, which was only issued on the 1E1 paper.
4. An additional reference for a specific plate: This naming convention is required for the 10c Rivadavia red, with types I and II, and the 10c Rivadavia Brown, with types A and B.
5. An additional reference for a specific color: This naming convention is required for the 15c Small Format Cattle, issued in dark blue and only on the 1E1 paper, as 15cSC-D, and also issued in light blue and on a later paper, as 15cSC-L.

I mention several examples that show how my naming convention works:

1. The 8c value was issued in one design, on one paper, on one plate, and on one color.
Reference: 8c.
2. The 10c Rivadavia was issued in red and a range of browns, on many papers, and on at least four plates. Example references: 10cR-I, 10cBRCL1-A.

For the 18 papers I use the following scheme:

1. The early papers with the first watermark are the 1Ex papers, with x as of this edition being 1 to 4.
2. The clay papers were printed in two groups, CL1A and CL1B in 1943; and CL2A and CL2B in the 1950s.
3. The un-watermarked papers are of two types: grid from 1945 (NGR), and opaque from approximately 1948 (NOP).
4. The paper with the second watermark is found in three types: clear (2C), diffuse (2D), and with narrow rays (2N).
5. The late papers with the first watermark are the 1Lx papers, with x as of this edition being 1 to 5.

How this series came about

Thanks to a reference provided by one of the 'Foreros,' or members of the Argentinean Philately Forum, I learned about the existence of the book published by the Argentinean Post Office, Volume I, in 1939, by Antonio Deluca, and titled "Stamps and other postal and telegraph issues." This book contains key information about This series, about which Deluca mentions the following:

The decision to replace the San Martin issue by a new series came from 1931, but was abandoned due to the Argentinean Post Office 's economic hardship. Its director, Mr. Carlos Risso Dominguez, sent a memorandum to the Ministry of the Interior, dated November 28, 1932, in which he outlines basic facts about this series that I did not know before I obtained this book. The basic facts contained in this memorandum are:

1. There were several postal forgery incidents that cost the Argentinean Post Office a large loss of revenue. "In 1921 a postal forgery of the 5c stamp was found, and it incurred a loss of approximately 1 million pesos of national currency in a few months. There seems to be an additional forgery of higher quality and affecting the 2c and 5c values. It is then without doubt that the prolonged use of the same stamp type conspires against its legitimacy and affects adversely our collection of revenue."
2. Four categories were proposed for the new issue:

"a) Publish the likenesses of those signing the Declaration of Independence..."

"b) Publish the likenesses of those signing the 1853 Constitution..."

"c) Publish a selection of the likenesses of important military and civilian figures...and in addition add symbolic figures representing the Republic as shown on our currency, and mainly the Argentinean shield in its authentic model."

"d) Finally...use the stamps for an increased awareness of our products and therefore put in effect a news-wrothy promotion in its favor, just as other countries do..."

There then take place several bureaucratic steps typically required for a new stamp series: authorization by the Ministry of the Interior, design contest, and authorization by the President of the Republic. The second memorandum containing facts about this series was sent by the commission making recommendations on this new issue to the Argentinean Post Office on July 4 1933:

1. " The commission proposes the portraits for the following important figures to be featured in as many issues: San Martin, Rivadavia, Moreno, Belgrano, Sarmiento, Mitre, Urquiza, Rodriguez, Guemes, Velez Sarsfield. Within the context of promoting, the commission indicates, of course, the map of the Argentinean Republic, and the following industries: Cattle, Agriculture, Oil, Wine-making, and Sugar Cane."
2. This memorandum recommends the use of papel without watermark, somewhat thicker than the one being used at the time for typographed printing, and with white gum. It is interesting that the characteristics in this recommendation correspond to only one of the 18 papers for This series: the NOP, or opaque paper not in the catalogs from approximately 1948.
3. The recommended dimensions are: 19 by 24 mm, and 21 by 28 mm.

4. The designs and initial printing quantities recommended are:

1/2c Urquiza (50 million); 1c Guemes (30 million); 3c Rodriguez (120 million); 5c Agricultura (60 million); 6c Sarmiento (40 million); 10c Belgrano (300 million); 15c Mapa (20 million); 20c Mitre (10 million); 30c Sugar (12 million); 35c Cattle (6 million); 40c Wine-making (10 million); 50c Velez Sarsfield (6 million); 1p Oil Industry (2.5 million); 5p Rivadavia (50000), 10p Moreno (20000), 20p San Martin (10000).

5. Only one design is recommended for the official issues, with each denomination having its own color: "The current system, is unappealing and very costly, because it forces specialized printings of the overprints. In addition, the wide range of papers and printings of the stamps and of the very same overprints, cause that collectors seek them, causing a disfunctional inventory, given that they cannot be acquired at post offices..." This memorandum includes other details about the official issues, including proposed values and printing quantities.

The Casa de Moneda (the Argentinean Treasury, in charge of printing stamps) makes the following design and respective denomination recommendations to the Argentinean Post Office on May 23, 1934:

Mitre 1/2c y 1c; Sarmiento 2c; Moreno 10c; Belgrano 5c y 20c; Southern National Park 12c; Sugar 10c; Argentinean Republic, wheat 15c; America and the Argentinean Republic, fruits of the country 5c; Oil 2c; Agriculture 10c; Republic and the farmer 5c; Christ of the Andes 2c; Republic and Shield 12c; Wheat Stalks 5c y 10c; Allegorical figure and wheat 10c; Iguazu Falls 50c. The most interesting fact in this memorandum is mention of Iguazu Falls. This memorandum mentions many designs that were not adopted.

Deluce mentions documents that relate to collaboration between the Argentinean Treasury and the Argentinean Post Office, in which the adopted characteristics are outlined: the use of a small format for the values up to 20c, and of the large format for values 25c and up.

On July 16 of 1934 the Patriot values as we know them from 1/2c to 20c were finalized.

Durante the period spanning October 25, 1934 and February 13, 1935 the Resources values as we know them from 25c to 20 pesos were finalized.

On September 14, 1935, the Argentinean Post Office took the following actions:

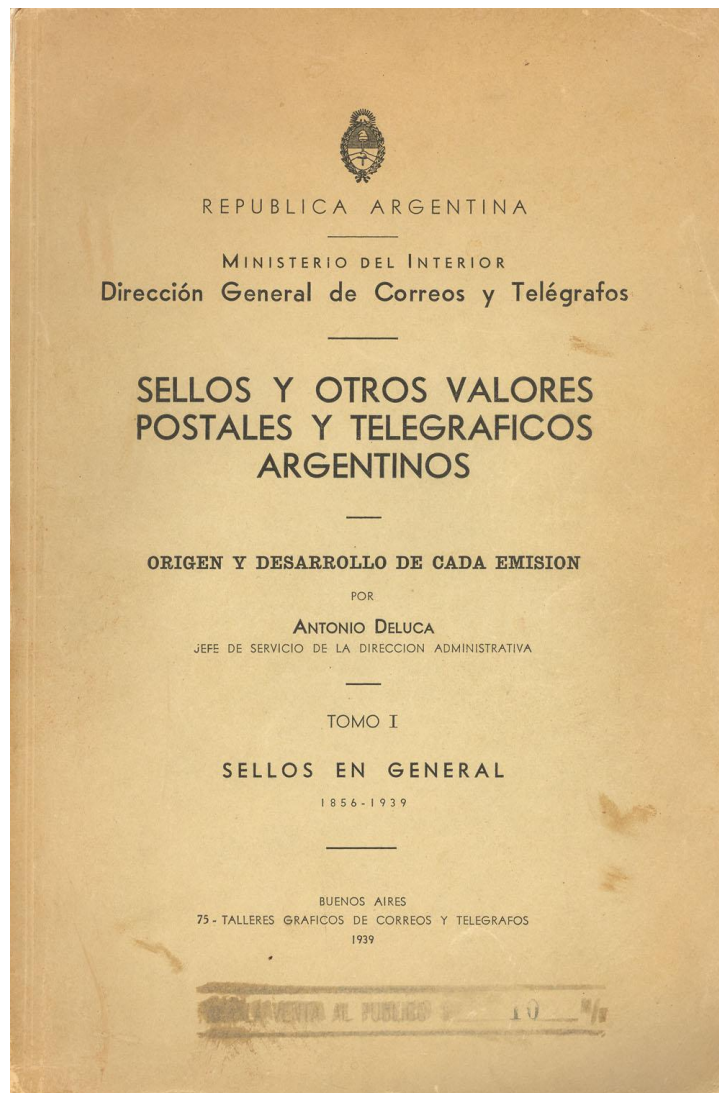
1. Decides to issue on October 1, 1935 the 1/2c, 1c, 2c, 3c, 4c, 5c, 6c, 10c, 12c, y 20c (fullname version: JMG) values.
2. Demonetizes from January 1, 1936 onwards the previous (San Martin) issue.
3. Allows the exchange of San Martin stamps for the new stamps during the first 90 days of 1936.

On November 22, 1935, the Argentinean Post Office decides to issue the 15c, 25c, 30c, 40c, 50c, 1p with map boundaries, 2p, 5p, 10p, and 20p values January 1, 1936.

According to Deluca, public notice of the new issue "was made by special announcements, and the printing of 5000 stamps for each value." I speculate that these stamps are the ones we come across with specimen ("MUESTRA") overprint.

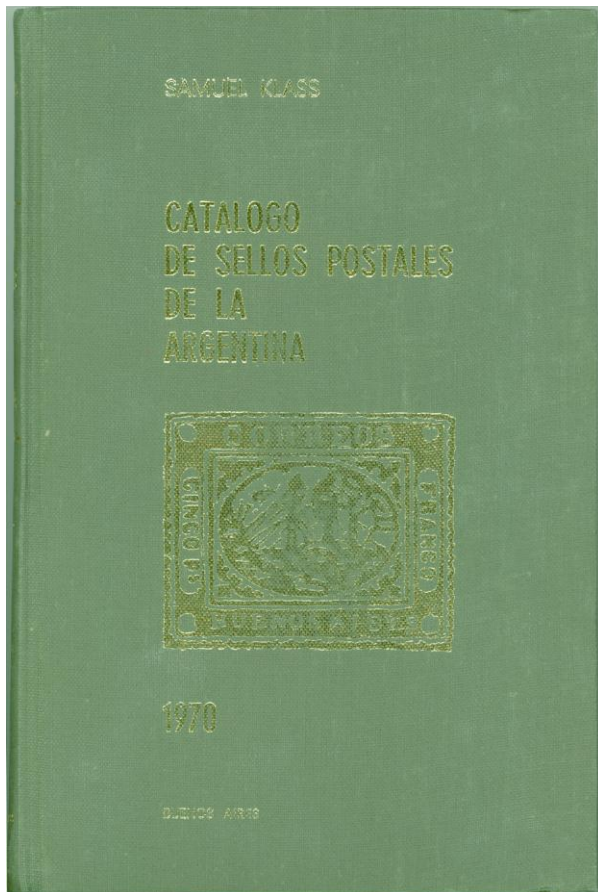
Catalogs and other References

The only primary reference I have for Arg3551 is the book published by the Argentinean postal authorities in 1939, and authored by Antonio Deluca. It is the first volume of two and the second volume I have been told does not cover postage stamps. This book contains various design details, printing quantities for the 1 peso with map boundaries, and transcripts of interesting official documents for Arg3551. The classic specialized catalog of Argentina, written by Victor Kneitschel, is an important secondary source. There are several editions, all printed in small runs. I have the 1951 copy, which is sufficient for my needs, although I would like to have the two volume edition published a few years later. This catalog has a reasonable listing of the regular issues, and a thorough listing of the official issues-the latter is the most complete listing at my disposal.

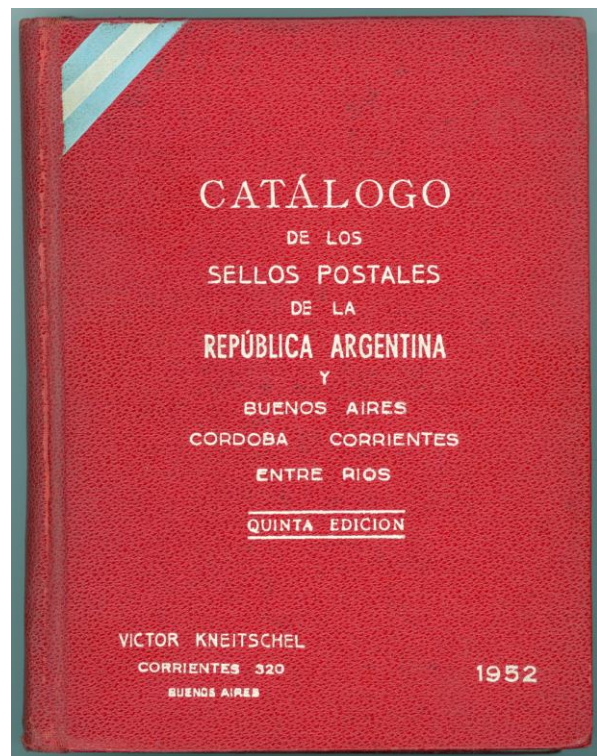


The specialized catalog written by Samuel Klass is my most important secondary source for the regular issues. It contains the most complete reference to all sorts of varieties and a few earliest use mentions. Klass has a summarized listing of the Arg3551 officials. The catalog that is most often quoted on the Web Forum is referred to as Petrovich, although it is currently published by Mello Teggia. The Mello Teggia numbers get quoted as Pt, for Petrovich. The Mello Teggia catalog is dated 1998 and has a 2000 supplement. This catalog is a direct descendant of Kneitschel. I also have access to scans of the Uniphila catalog for the Arg3551 regular issues. The Uniphila catalog describes the papers as well as Klass does.

Klass 1971



Kneitschel 1952



Saturday, August 1, 2009

25c range of use

Here is a first attempt at establishing range of use as well as relative rarity of each printing. With the exception of one of the 1E4s (highlighted in red), all of the dates are within range- i.e. there aren't any early uses one or two years before the known earliest use from looking at many specimens over the years.

	1E1	1E2	1E3a	1E4	1E3c	NGR	1E3b	NOP	2C-H	2C-V	1L
1936	1	1									
1937		3									
1938		7		1							
1939			7								
1940			3	6							
1941					13						
1942			2	2	17						
1943					18						
1944					10						
1945					4	4	2				
1946					1	2	6				
1947											
1948						2		1			
1949								1	1	2	
1950									1		
1951									4		
1952										1	2
Total	1	11	12	9	63	8	8	2	6	3	2
125	0.80%	8.80%	9.60%	7.20%	50.40%	6.40%	6.40%	1.60%	4.80%	2.40%	1.60%

The 25c1E1 is very rare, 50 percent of this sample are 1E3c's-the symmetrical box grid, and most of the other papers are also rare. The results from this small sample are consistent with my previous experience.

Saturday, April 18, 2009

Second day of issue 1935 cover

I have just received this cover, dated October 2, 1935. It is a philatelic cover.



Here is the back of the cover...



...and here is a detail of the postmark.



These stamps were issued October 1, 1935.

Thursday, July 2, 2009

Brigada and Ambulante explained

Based on information from aficionado, a member of the Filatelia Argentina forum, the Brigada postmarks are the first type for the roaming (Ambulante) service for mail from Buenos Aires to the interior of the country. I previously did not know what the Brigada postmarks were for, or that they are an early type of Ambulante postmark.

Here is a Brigada 18 example.



Here is an Ambulante No. 92.



Saturday, October 31, 2009

[A few 40c early postmarks](#)

This first specimen is 1E1.





This stamp has a plate flaw likely from when the plate was assembled.



Saturday, July 4, 2009

[Buenos Aires non-standard postmarks part 1](#)

Except for A.P., I do not know the meaning of the letters appended to Buenos Aires in these postmarks.

A.P. (Agencia Postal)



(E) V 10 and 20







3-V :: D-G. y E.



V.5 :: R



Saturday, July 4, 2009

[Buenos Aires non-standard postmarks part 2](#)

I do not know the meaning of the letters appended to Buenos Aires in these postmarks. The V.A. that is added to E.R.V. to come up with E.R.V.V.A. 2 could mean VIA AEREA.

E.R.V. 1o and 2o :: E







VIA AEREA :: E



E.R.V.V.A.2 :: E



Sunday, March 22, 2009

[An early cover bearing the 10c Rivadavia Brown](#)

Tenorio mentions that the first, and rare printing in offset of this stamp was issued March 16, 1939; and that the first typographed printing was issued November 4, 1939. The following cover is from June 1939 and bears two typographed stamps. I have previously shown other typographed specimens postmarked before the issue date mentioned by Tenorio.



This cover has a dated company stamp on the back.



Here are details of the stamps, showing the traits of typographed stamps: extra ink outside the design, and outside the upper right corner.





Thursday, July 2, 2009

[Buenos Aires special use postmarks](#)

Here are several Buenos Aires specimens for specific types of mailings.

BUENOS AIRES E I



BUENOS AIRES E R V (I can't make out the last letter)









Sunday, June 28, 2009

[The 1943 CL1B 1 peso and 2 pesos on cover](#)

These stamps can be spotted easily on cover because of the high contrast of the bright/highly reflective white paper they were printed on.

Here are two selections from covers in the Continental Grain Correspondence,

[Continental Grain Correspondence 1 Peso covers page](#)



and a superb find: the extremely rare 2 pesos clay from 1943. Never mind that it is on a 5 pesos cover-that alone would make this cover rare, but the 2pCL1B is the find here, and not the 5 pesos, which is most likely a 5p1E4.

[The very rare 2 pesos on cover \(quite a find!!!\)](#)



Monday, October 12, 2009

Late usage of the 2 pesos and 5 pesos

These are the two latest uses I have.

2 pesos canceled December (16?) of 1956.



and 5 pesos canceled February 28 of 1957.



Monday, October 12, 2009

[A postal entire with Census information](#)

This postal entire found limited use. It has information about Argentina from 1934.



The stamp is Type II.



Here are details of the back of this entire, a fold-out.

REPUBLICA ARGENTINA		POBLACION Y DESEMPEÑO		COMERCIO Y TELEGRAFOS		FINANZAS		EDUCACION	
Informaciones correspondientes al año 1934		Miles de habitantes		Miles de habitantes		Miles de habitantes		Miles de habitantes	
GOBIERNO NACIONAL		Capital Federal		Ministerio del Interior (Dr. Leopoldo Melo)		Presupuesto		Escuelas Primarias	
Presidente de la Nación		Buenos Aires		Ministerio General de Correos y Telégrafos		Ingresos		Escuelas secundarias	
Vice-presidente: Dr. Julio A. Roca		Rosario		Ministerio de Justicia y Negocios		Egresos		Escuelas terciarias	
PODER LEGISLATIVO		Córdoba		Ministerio de Fomento		Reserva		Escuelas técnicas	
Cámara de Senadores		Bahía Blanca		Ministerio de Guerra y Marina		Fondo de reserva		Escuelas de artes y oficios	
Cámara de Diputados		Mar del Plata		Ministerio de Hacienda		Fondo de reserva		Escuelas de comercio	
Presupuesto de la Nación		Montevideo		Ministerio de Trabajo y Previsión Social		Fondo de reserva		Escuelas de medicina	
Gral. Ing. Agustín P. Justo		Buenos Aires		Ministerio de Instrucción Pública		Fondo de reserva		Escuelas de ingeniería	
Vice-presidente: Dr. Julio A. Roca		Rosario		Ministerio de Agricultura		Fondo de reserva		Escuelas de arquitectura	
PODER JUDICIAL FEDERAL		Córdoba		Ministerio de Fomento		Fondo de reserva		Escuelas de derecho	
1 Corte Suprema		Bahía Blanca		Ministerio de Guerra y Marina		Fondo de reserva		Escuelas de filosofía	
6 Cámaras		Mar del Plata		Ministerio de Hacienda		Fondo de reserva		Escuelas de letras	
23 Juzgados		Montevideo		Ministerio de Trabajo y Previsión Social		Fondo de reserva		Escuelas de ciencias	
PRESUPUESTO DE LA NACION		Buenos Aires		Ministerio de Instrucción Pública		Fondo de reserva		Escuelas de matemáticas	
(en miles de \$ m/n.)		Rosario		Ministerio de Agricultura		Fondo de reserva		Escuelas de física	
Rentas..... 796.406,4		Bahía Blanca		Ministerio de Fomento		Fondo de reserva		Escuelas de química	
Gastos..... 795.800,4		Mar del Plata		Ministerio de Guerra y Marina		Fondo de reserva		Escuelas de biología	
COMERCIO EXTERIOR		Montevideo		Ministerio de Hacienda		Fondo de reserva		Escuelas de historia	
(en miles de \$ m/n.)		Buenos Aires		Ministerio de Trabajo y Previsión Social		Fondo de reserva		Escuelas de geografía	
Exportación.... 1.438.434		Rosario		Ministerio de Instrucción Pública		Fondo de reserva		Escuelas de psicología	
Importación.... 1.109.932		Bahía Blanca		Ministerio de Agricultura		Fondo de reserva		Escuelas de sociología	
Saldo comercial positivo..... 328.502		Mar del Plata		Ministerio de Fomento		Fondo de reserva		Escuelas de antropología	
Total general del comercio exterior..... 2.548.366		Montevideo		Ministerio de Guerra y Marina		Fondo de reserva		Escuelas de arqueología	
Exportación		Buenos Aires		Ministerio de Hacienda		Fondo de reserva		Escuelas de etnología	
Productos de:		Rosario		Ministerio de Trabajo y Previsión Social		Fondo de reserva		Escuelas de lingüística	
Ganadería..... 1.085		Bahía Blanca		Ministerio de Instrucción Pública		Fondo de reserva		Escuelas de filosofía	
Agricultura..... 13.589		Mar del Plata		Ministerio de Agricultura		Fondo de reserva		Escuelas de matemáticas	
Forestales..... 357		Montevideo		Ministerio de Fomento		Fondo de reserva		Escuelas de ciencias	
Varios..... 221		Buenos Aires		Ministerio de Guerra y Marina		Fondo de reserva		Escuelas de letras	
Totales..... 15.252		Rosario		Ministerio de Hacienda		Fondo de reserva		Escuelas de ciencias	
Valor en miles de \$ m/n.		Bahía Blanca		Ministerio de Trabajo y Previsión Social		Fondo de reserva		Escuelas de filosofía	
1.085		Mar del Plata		Ministerio de Instrucción Pública		Fondo de reserva		Escuelas de matemáticas	
13.589		Montevideo		Ministerio de Agricultura		Fondo de reserva		Escuelas de ciencias	
357		Buenos Aires		Ministerio de Guerra y Marina		Fondo de reserva		Escuelas de letras	
221		Rosario		Ministerio de Hacienda		Fondo de reserva		Escuelas de ciencias	
15.252		Bahía Blanca		Ministerio de Trabajo y Previsión Social		Fondo de reserva		Escuelas de filosofía	
1.438.434		Mar del Plata		Ministerio de Instrucción Pública		Fondo de reserva		Escuelas de matemáticas	

POBLACION Y SUPERFICIE

	Habitantes (miles)	Km. ²
Capital Federal	2.246,7	185
Buenos Aires	3.282,9	306.830
Santa Fé	1.439,2	134.827
Entre Ríos	670,0	78.330
Corrientes	473,7	88.901
Córdoba	1.169,1	168.152
San Luís	179,8	76.923
Santiago del Estero	433,2	138.439
Tucumán	493,9	22.836
Mendoza	468,2	148.783
San Juan	193,6	89.179
La Rioja	104,1	86.492
Catamarca	138,0	78.162
Salta	192,1	126.577
Jujuy	103,9	43.267
Territorios Nacionales e Islas Australes	612,6	1.209.230

Población Extranjera (miles)

Italianos	929,9	Ingleses	27,7
Espanoles	829,7	Alemanes	27,0
Amer. del Sud	204,8	Belgas	4,9
Franceses	79,5	Amer. del Norte ..	3,5
Austríacos	38,1	Otras naciones	212,9

Aptitud de las tierras

Para cereales	80 millones de hectáreas
„ agricultura y ganadería	109 „ „ „
Montes y bosques	50 „ „ „

Capacidad para 250 millones de habitantes

Temperatura

Media En verano:	Norte 26°, Centro 23°, Sud 16°.
„ invierno:	„ 15° „ 10° „ 3°.
Lluvia „ verano:	„ 530 mm. „ 300 mm.,, 100 mm.
Media „ invierno:	„ 200 „ „ 250 „ „ 150 „

CORREOS Y TELEGRAFOS

Ministro del Interior: Dr. Leopoldo Melo

Director General de Correos y Telégrafos:

Dr. Carlos Risso Domínguez

Movimiento postal y telegráfico

Miles		
Piezas post. . . .	642.544,1	Ofic. de C. y Telég. 3.812
Desp. telegráf. . .	7.270,1	Cías. de Radio 4
Líneas tel. Kms. . .	47,3	Est. Radiodifusoras . . 37
Desarrollo	127,0	Cías. Telefónicas . . . 45
Producidos	42.844,2	Abonados (miles) . . . 273
Gastos	57.092,4	Líneas Aeropost. . . . 5

FERROCARRILES

	Millones \$ o/s.
En explotac. kms. 39.830	Capital 2.000,0
FF. CC. del Estado 9.010	Producidos 215,2
Locomotoras 4.090	Gastos 161,8
Vag. pasajeros . . . 3.573	Utilidades 53,4
„ carga 82.957	

Vapores y Veleros

Entrados	61.623
Con toneladas . .	38.077.039
Ríos navegab. kms. 3.215	
Costas marítimas „ 4.000	
Canales balizados . . 3.584	
Faros marítimos . . 142	
Costas ilumin. kms. 4.268	
Cías. Naveg. Argent. 6	
„ „ Extr. . . . 15	

Puertos Principales

Bs. Aires calado 32 pies
Rosario „ 27,5 „
B. Blanca „ 25 „
M. del Plata „ 35 „
La Plata „ 29 „
Diques de
carena „ 6 „
Invertido en:
Puertos \$ m/n. 495.079.589
Marina mercante argentina: toneladas . . . 599.457

Caminos de calzada firme	7.231 kms.
Red Nacional de caminos proyectados	42.000 „
Número de vehículos automotores	287.021

BANCOS

(en miles de \$ m/n.)

Capital	657.728	Préstamos	3.424.500
Depósitos	3.426.600	Utilidades	15.487

Nacionales: 2

Bco. Nación Argentina. Sucursales 238; Cap. \$ 235.921;
Préstamos \$ 1.669.100; Depósitos \$ 1.565.200.

Bco. Hipotecario Nacional. Suc. 30; Prést. \$ 1.482.032;
Reservas \$ 217.684.

Argentinos 15

Cap. \$ 338.471; Prést. \$ 1.713.100; Deposit. \$ 41.300.400;
Utilidades \$ 12.535.

Extranjeros 9

Capital \$ 83.336; Prést. \$ 617.400; Depósitos \$ 707.600;
Utilidades \$ 2.952.

GANADERIA

AGRICULTURA

Existencia de:	Miles	Producción de:	Miles
Ovinos	44.413	Cereales ...	17.481,0 ton.
Bovinos	32.212	Azúcar	318,9 „
Equinos	9.858	Algodón ...	113,3 „
Cabrios	5.647	Elev. de granos exist.	144
Porcinos	3.769	Prod. petróleo	2.176,6 m ³
Mular y asnal	1.039	Destilerías	12

Diques de embalse o derivados	11
Canales y acequias	kms. 1.251.000
Valor de las obras	\$ m/n. 160.000.000
Terrenos bajo regadío	hectáreas 950.000
Valor de los mismos	\$ m/n. 500.000.000

EDUCACION

Enseñanza Primaria		Enseñanza Secundaria	
Escuelas Primarias:		Escuelas normales ... 113	
Nacionales	5.892	„ de Artes y Ofic. ...	35
Provinciales	5.538	„ Industriales ...	9
Particulares	1.130	„ de Comercio ...	66
Total	12.560	„ Profesionales ..	33
		„ de Bellas Artes .	5
Alumnos inscriptos:		Coleg. Secundarios .. 195	
Enseñ. Nac. ...	790.507	Escuelas especiales:	
„ Prov. ..	784.393	Esc. Navales	3
„ Part. ..	127.636	„ Aviación	16
Total	1.702.536	„ Minas	1
		„ Militares	13

ENSEÑANZA UNIVERSITARIA

Escuelas de Derecho ..	4	Escuelas Filos. y Letras	2
„ „ Ingeniería. 5		„ Cienc. Económ. 2	
„ „ Medicina . 4		„ Quím. y Farm. 3	
		„ Agron. y Veter. 2	

OTRAS INSTITUCIONES CULTURALES

Museos, Artes, etc. ...	40	Observ. Meteorológ.	120
Obser. Astronómicos ..	4	Bibliotecas	1.681

INSTITUTO GEOGRAFICO MILITAR

Superficie triangulada	350.000 kms.2
„ topografiada	288.000 „

PERIODISMO

Diarios	Periódicos y Revistas
Capital Federal	70
Prov. y Territorios ..	306
	376
	735
	1.585
	2.320

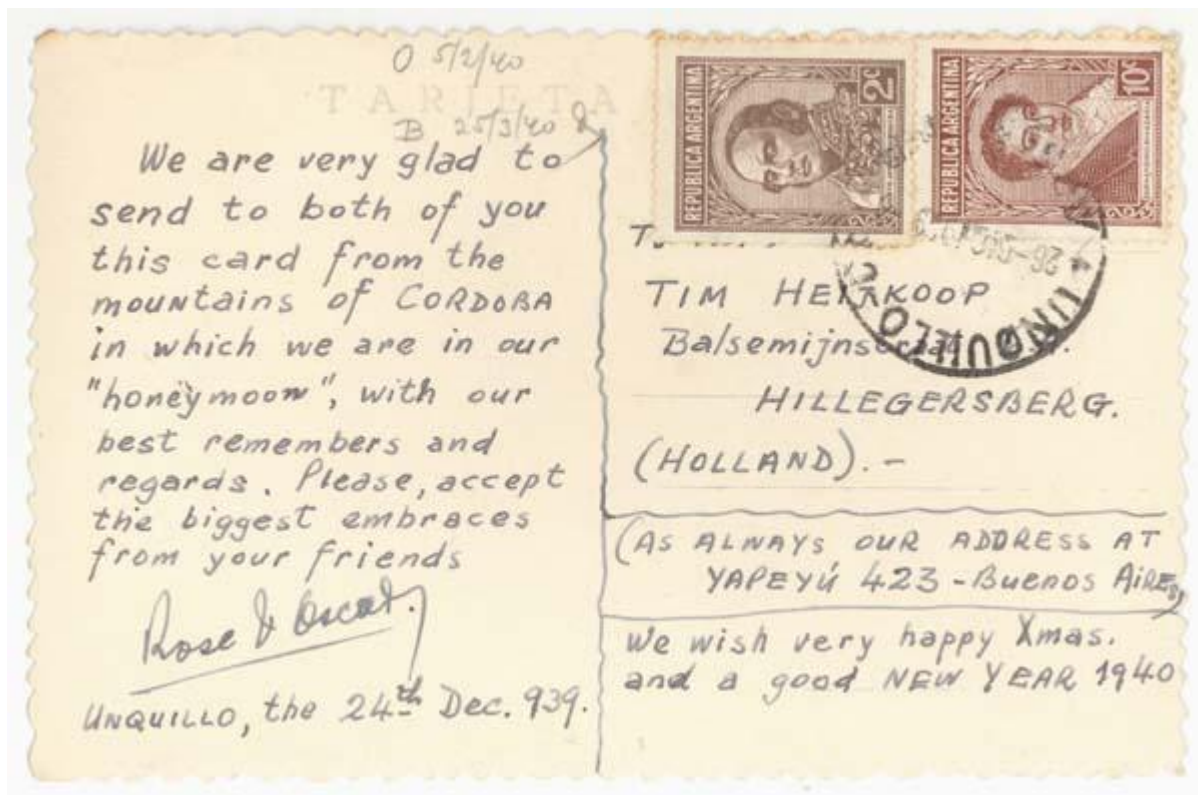
Total de publicaciones: 2.696

Monday, October 12, 2009

A small selection of used postcards







let's try to meet near
 here in Florida. I think
 we are ready for a long
 quiet time after this trip
 around so America. Near
 interesting & beautiful. The
 a bit rugged at times
 this is called like Switzerland
 and perhaps for trout & salmon.
 from the Draper



Mr. Edward Livingston
 690 River Road
 Beaver, Pennsylvania
 U. S. A.



Valle Encantado, Rio Limay

Foto Kalushki di
Basilcho 63



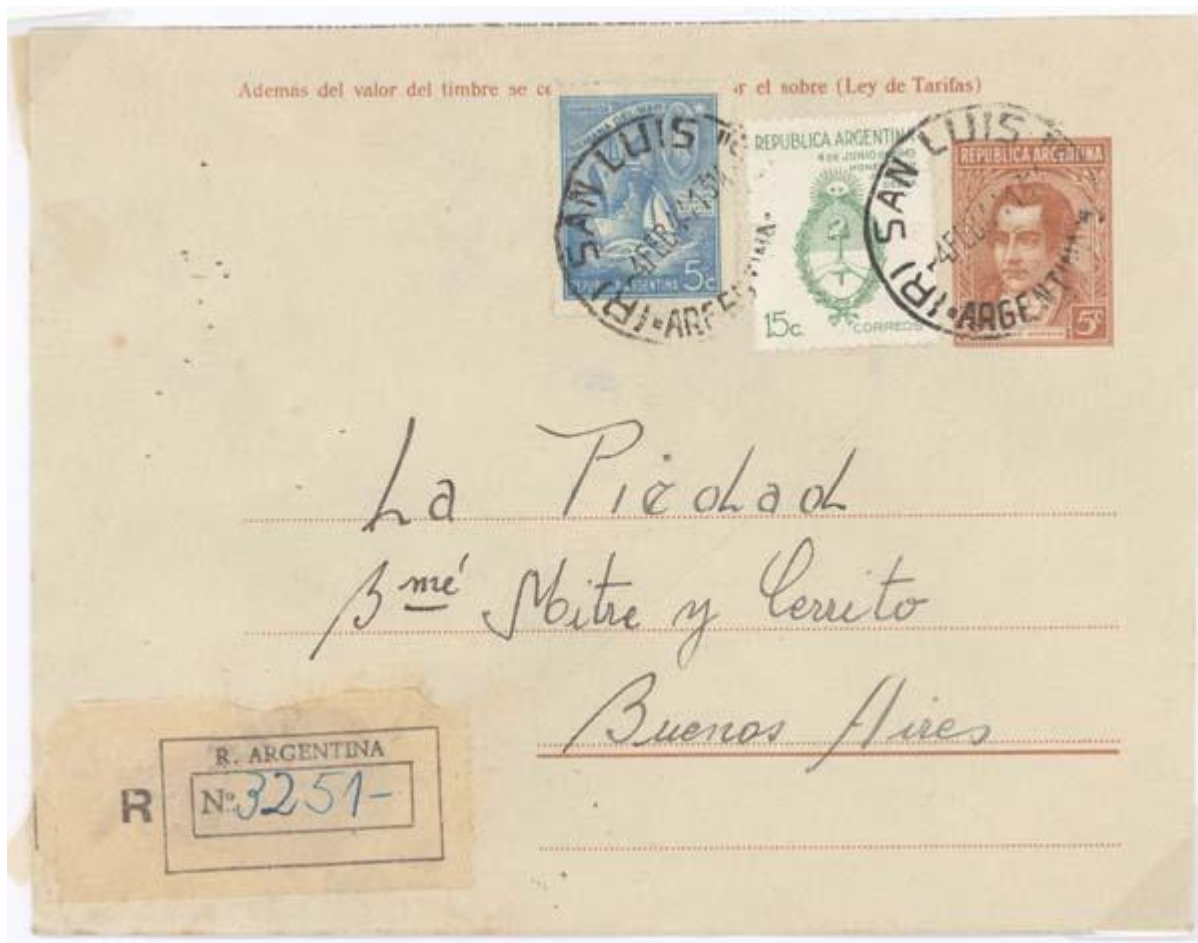
Monday, September 7, 2009

5c Postal Entires Plain Type

This ample shows usages to several businesses in Buenos Aires.







5c

5c

5c

REPUBLICA ARGENTINA

5c

REPUBLICA ARGENTINA

15c

LAS ROSAS

ARGENTINA

27 MAR 39

P. ARGENTINA R246999x

Alcornoque. 38 Boltmeerschauerstr. 370





Monday, September 7, 2009

5c Postal Entires Post Horn Type

This ample shows usages to several businesses in Buenos Aires.





Además del valor del timbre se cobrará un centavo por el sobre (Ley de Tarifas)



Ciudad



La Piedad

San Isidro 97

Donc Mito y herito

Buenos Aires

R

R. ARGENTINA

Nº 4734





Monday, September 7, 2009

5c Postal Entires Post Horn in Shield Type

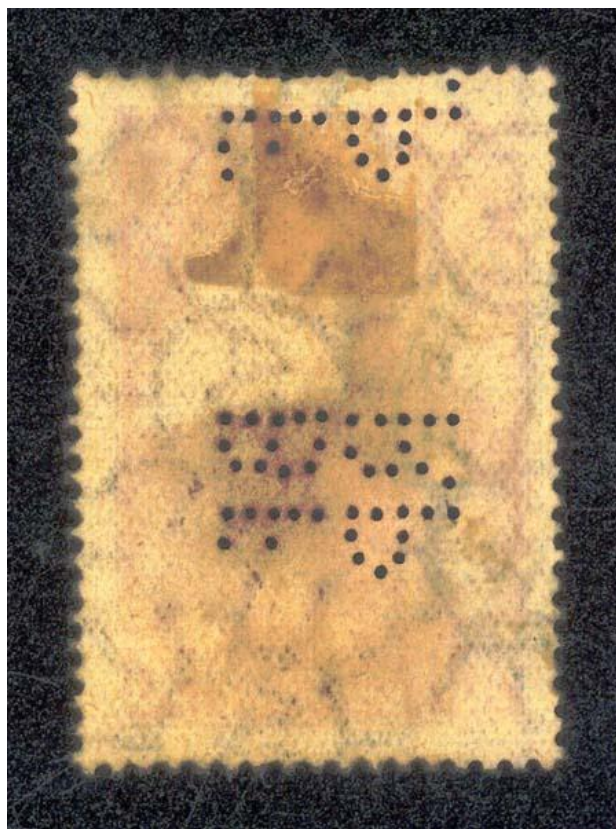
This ample shows usages to several businesses in Buenos Aires.



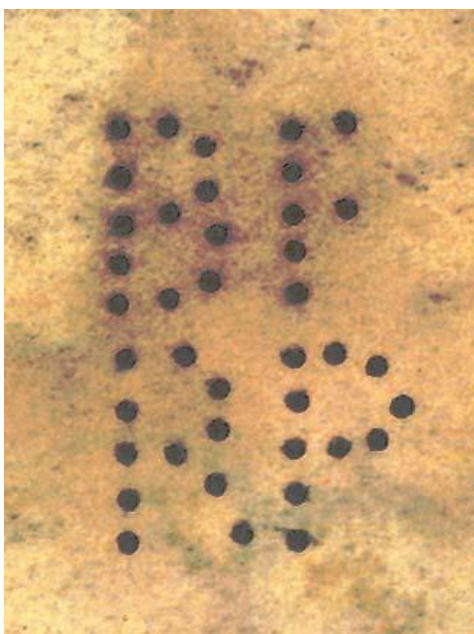
Sunday, May 10, 2009

[A 50c1E Perfin](#)

This 50c stamp has a two row perfin. The first row reads 'BF' and the second row reads 'RP.'



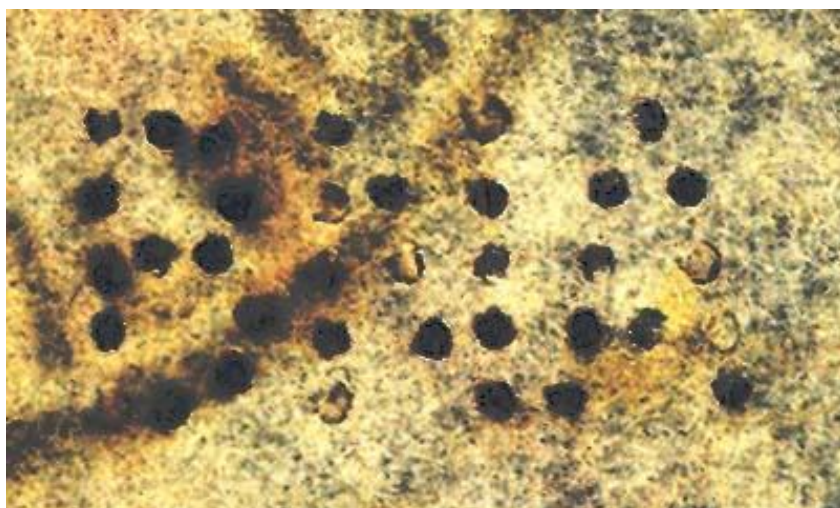
Perfin detail.



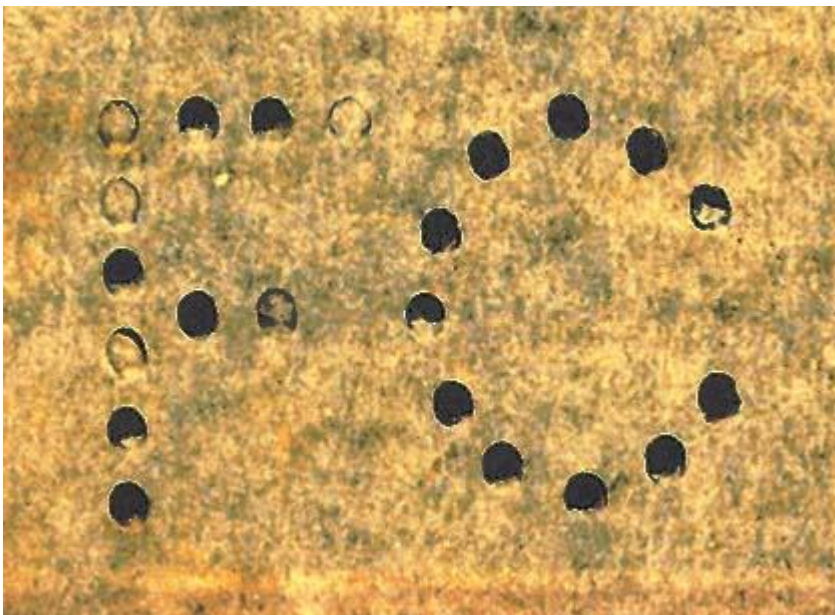
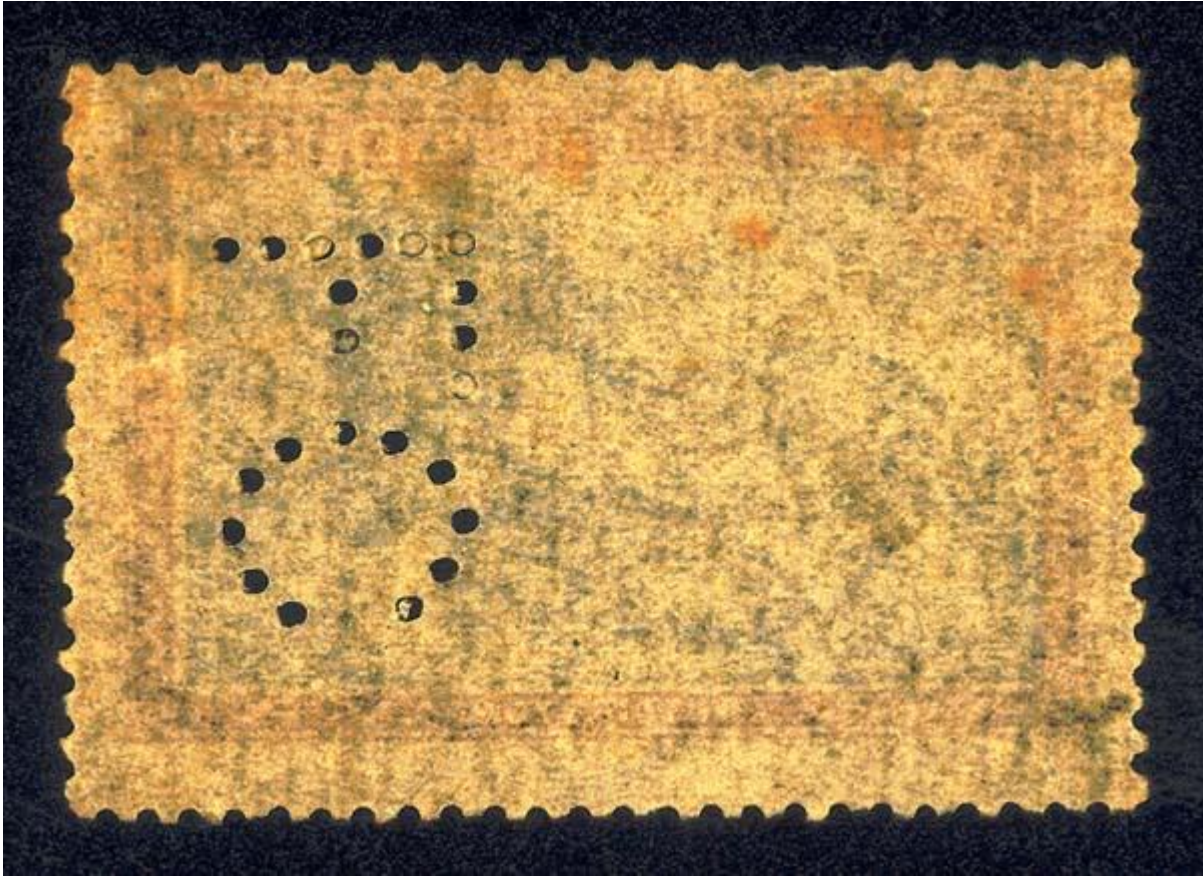
Saturday, June 6, 2009

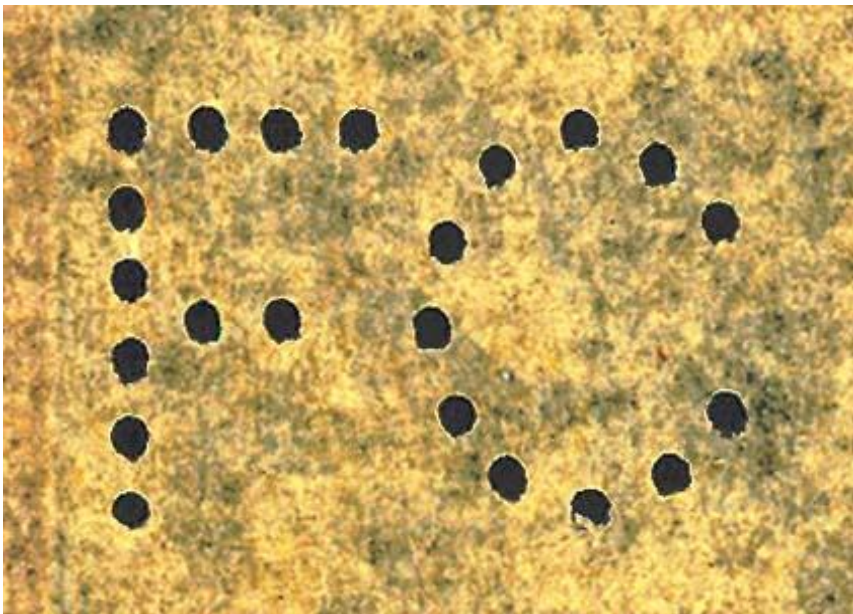
[Several 2 pesos PERFINs](#)

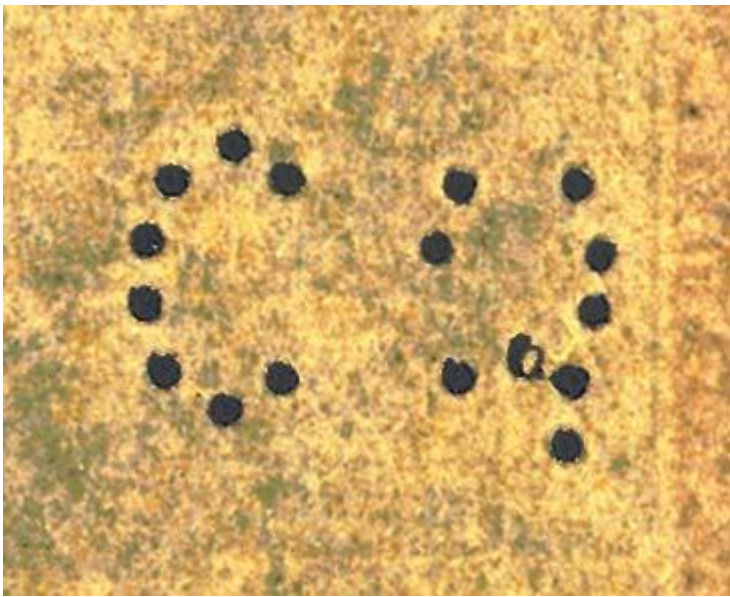
2P2C



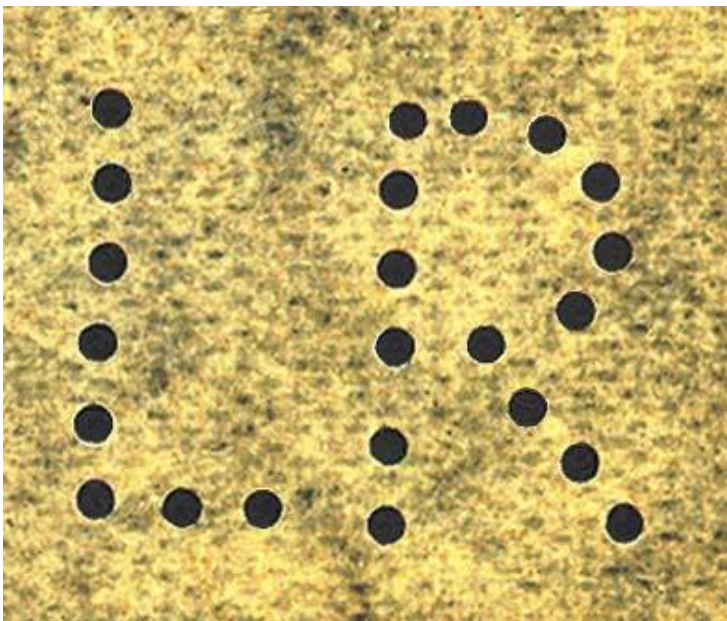
2P1L5Z

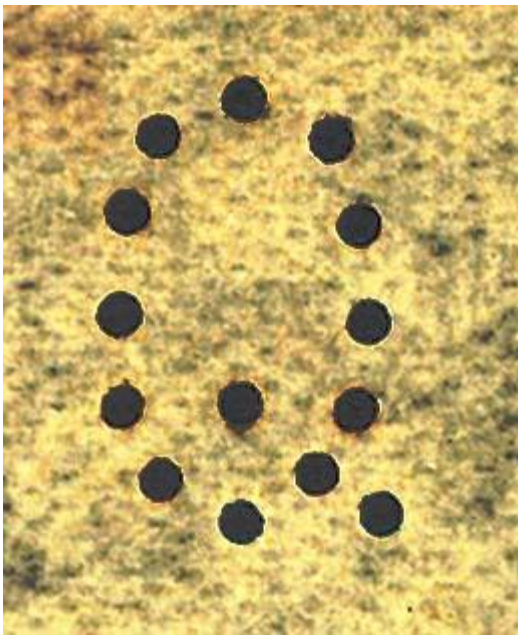
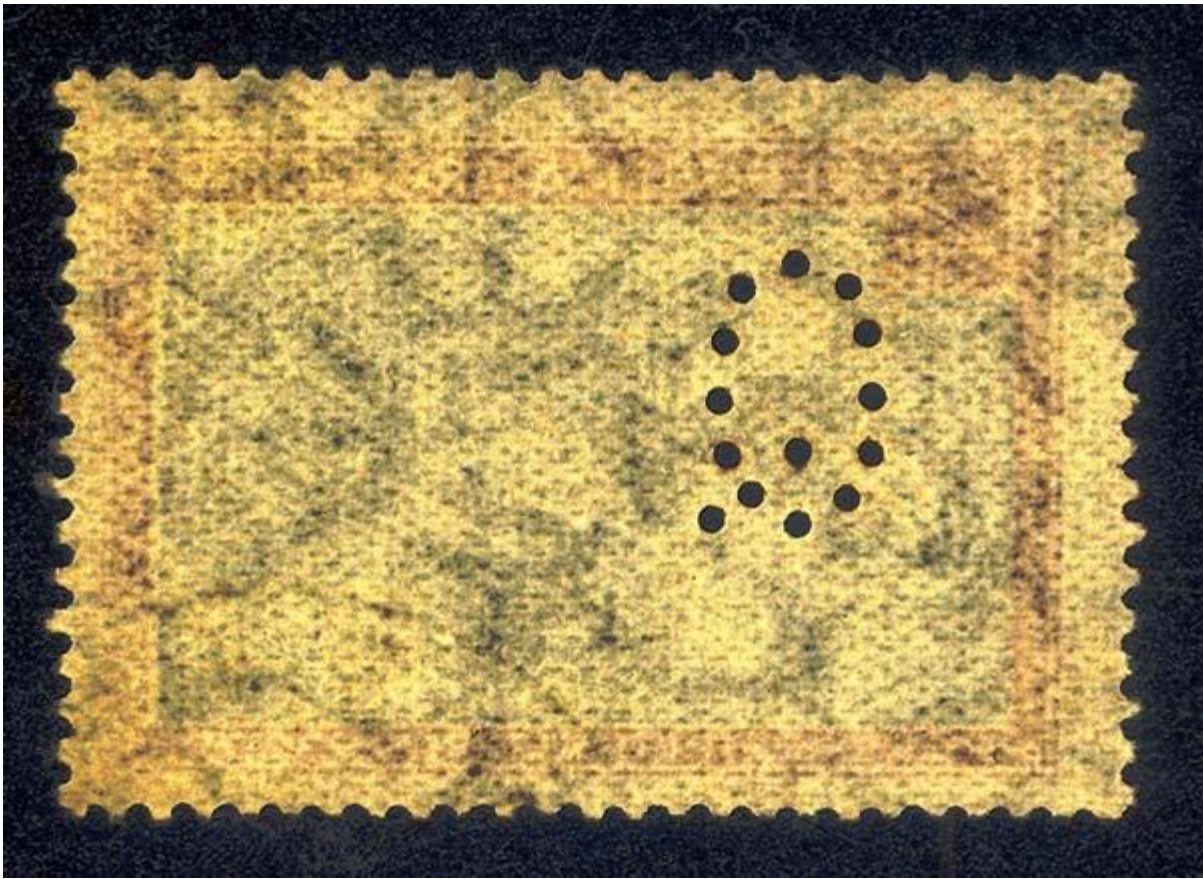






2P1L6

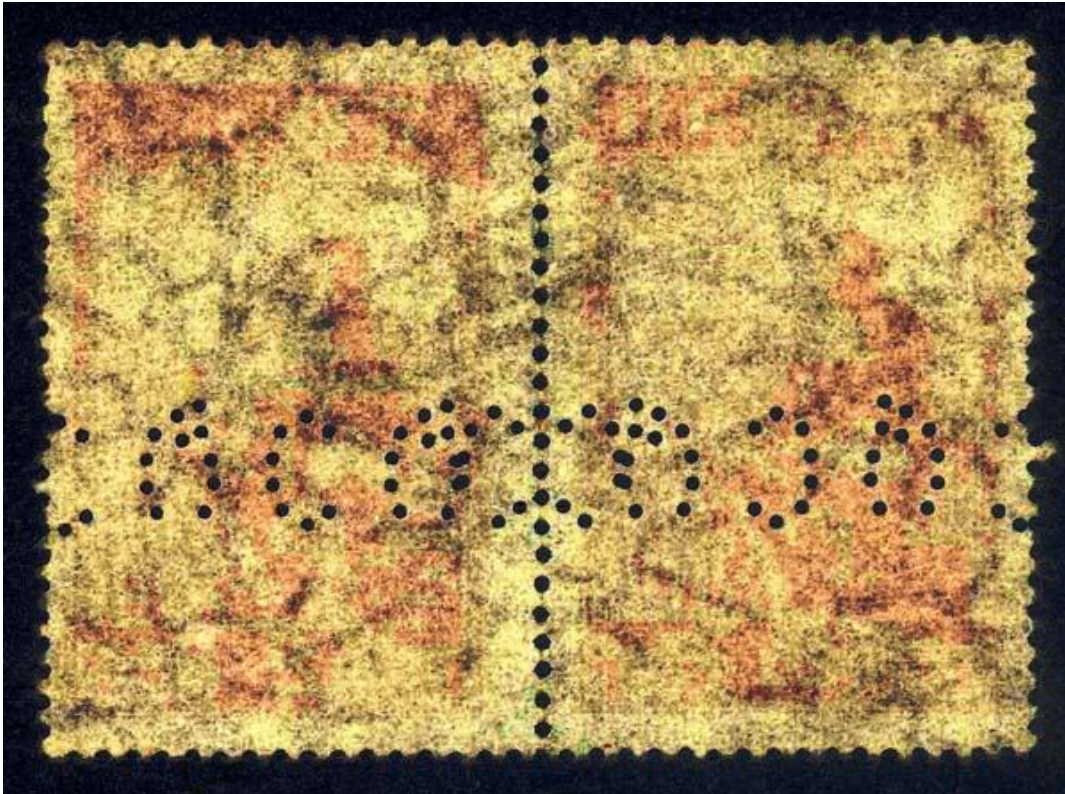




Friday, June 26, 2009

[Peculiar PERFINs](#)

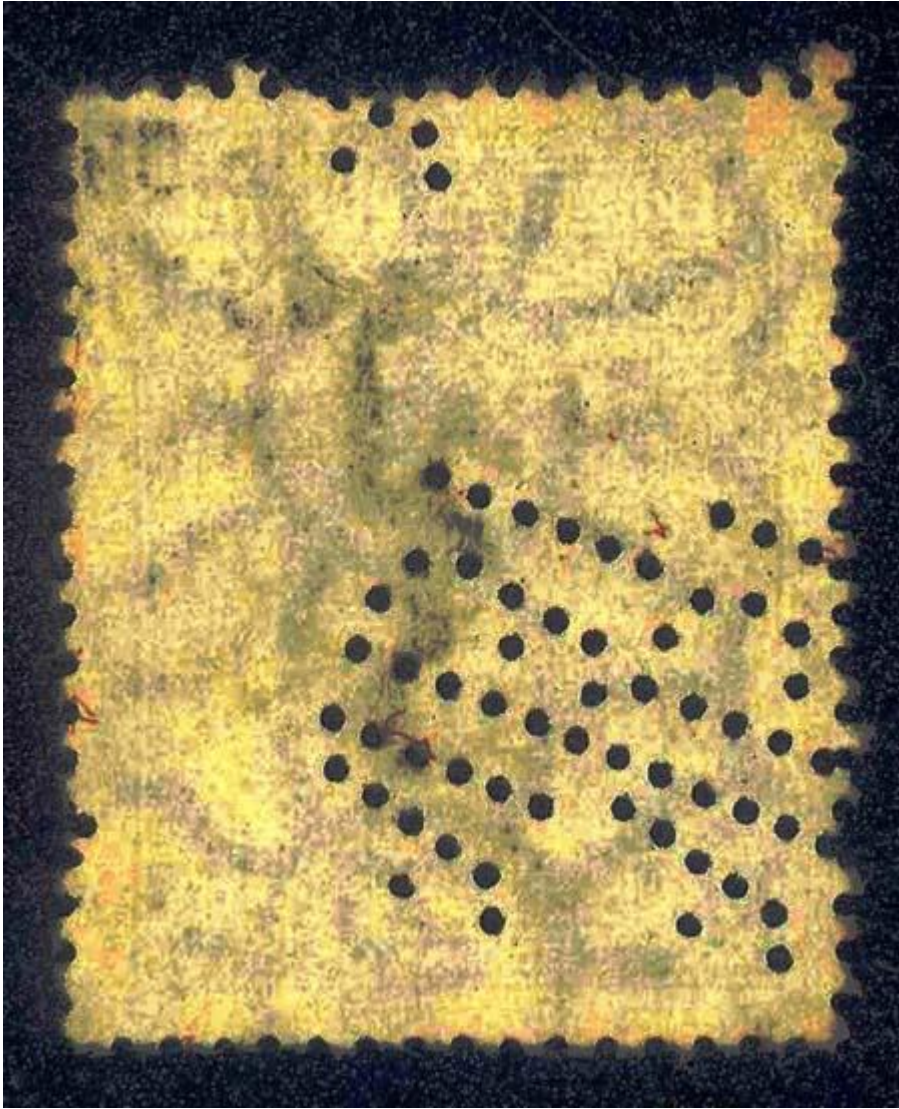
CQ applied multiple times per stamp.



CQ applied in mirror image on a block of four.



NBI doubled.



Friday, June 26, 2009

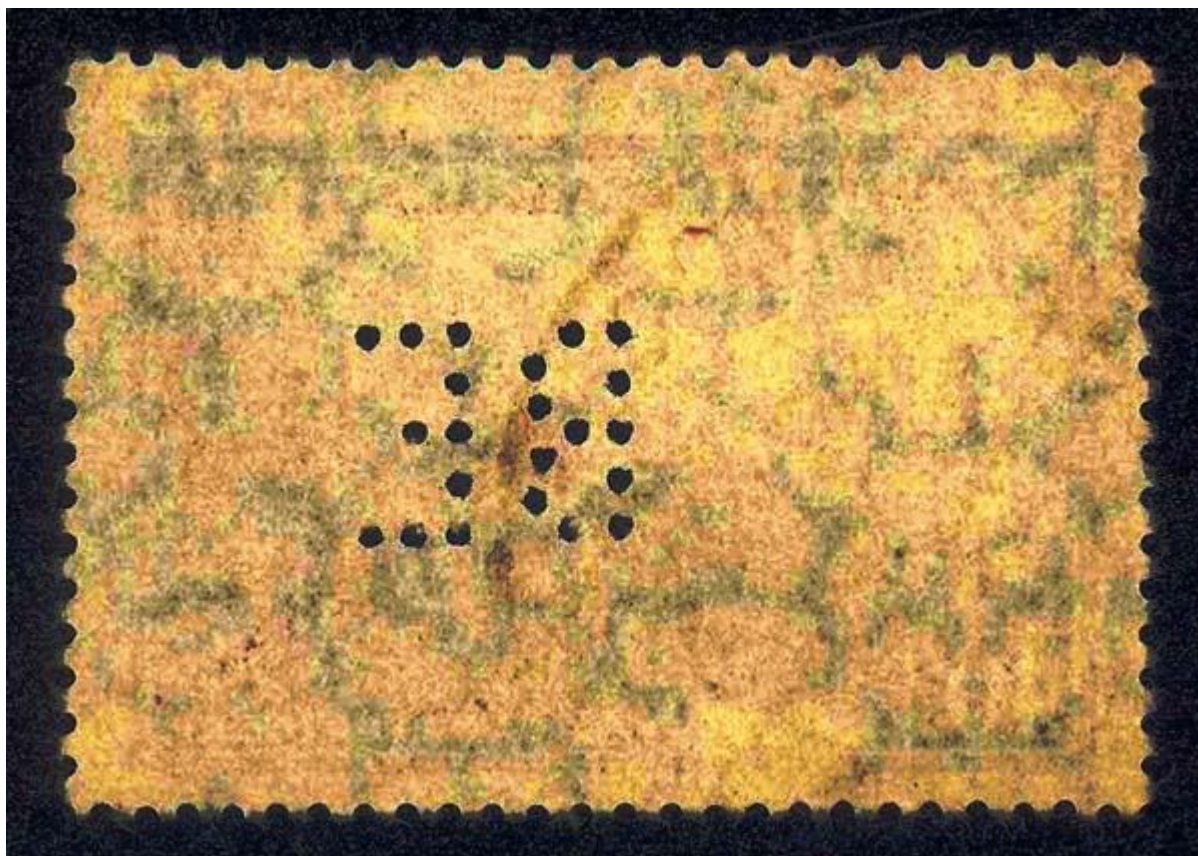
BE PERFIN

These two specimens are dated.

1pCL1B from 1944.



40c1L2 from 1955.



Saturday, July 4, 2009

[High value PERFINs](#)

Here are ACO 5 pesos specimens,



...and several 10 pesos with PERFIN A.M



Perfins Selection in Alphabetical Order



